

BETA PHI MU

Executive Board

Officers

Eileen G. Abels
President

Charles McElroy
*Vice President/
President Elect*

Amanda Ros
Past President

Directors

Susan W. Alman
Marie L. Radford
Elaine Yontz
Vinette Thomas

Directors-At-Large

Lynn Sillipigni Connaway
Susan E. Searing

Inside this issue:

Executive Director's Page	2
Updates from HQ	3
Wikipedia Initiative	4
Chapter News	5-12

The Pipeline



Spring

2015

President's Page

It is hard to believe that we will be gathering at the ALA Annual Conference in San Francisco in the near future. The Beta Phi Mu Board will be meeting during the conference and we will host our G-ALA on Saturday June 27th at 3:00 p.m. I hope to see many of you there! We will hear about chapter activities and we will induct new members who were unable to attend induction ceremonies at their home campuses. This is a great event, with good food and excellent networking opportunities.

In addition to business as usual, the Board Members will continue to discuss our role in a world where higher education continues to change at a rapid pace. I feel that honor societies continue to serve an important role in higher education, that of recognizing outstanding students. There is an expression that the only constant is change. I would argue that the role of honor societies in recognizing outstanding students has not changed – it is as important today as it was

when we were founded in 1948.

However, while our mission remains constant, how we function as a society needs to continue to evolve. Last year, I reported in the Pipeline that BΦM changed our Bylaws to recognize the impact of distance education. Some students do not live near the educational institutions offering the programs in which they are enrolled so they are unable to attend events. The Board Members are exploring other ways to better serve you and future members. We want to continue to provide value to you as a society. Let us hear from you with your ideas about this!

One notable change around us is the use of information technology and social media. Be sure to check out our website at <http://beta-phi-mu.org/> on a regular basis as it is being updated with news and content. When you visit the website, please take a few minutes to vote for new officers! This is important for the future of BΦM. Also, check us out on Facebook. If you **haven't already done so**, please like us on Facebook



Eileen G. Abels, Beta Phi Mu President

and follow us on Twitter @betaphimu. You can also request membership to our group on LinkedIn. We feel that our members can benefit from networking with other members. Please use our social media tools to keep up with our news, post about your accomplishments, keep up with other members.

This has been a great year for me as President and I look forward to continuing to be involved with Beta Phi Mu. I hope to see you in San Francisco or hear from you on social media!

Don't forget to vote!

Balloting site is open until June 15 .
Access the ballot here:
<https://www.surveymonkey.com/s/BPM2015Ballot>

Executive Director's Page

The Benefits of Membership

There have been some recent discussions on professional listservs and in other venues about the pros and cons of membership in honor societies, including Beta Phi Mu. As Executive Director of this honor society, I would definitely make the argument that the pros outweigh the cons, particularly if individual members are aware of the benefits and take steps to get involved on the level **that's right for them.** I'm happy to see current Beta Phi Mu President Eileen Abels also weigh in on the continued importance of the honor society and its role in recognizing outstanding graduates from LIS programs.

Beta Phi Mu strives to maintain high standards and to adhere to the guidelines set forth by the Association of College Honor Societies (ACHS); these standards are laid out in our by-laws regarding membership. Institutions electing new chapter or at-large members are encouraged to adhere to these standards, which go beyond just a high GPA, and to especially consider attributes such as a **candidate's leadership abilities** and potential to make contributions to the field. In this sense, recognition by the honor society serves as both a confirma-

tion of new members' abilities as well as encouragement to put those abilities to the best use possible.

As an honor society, Beta Phi Mu cannot and should not be expected to meet all of every **member's professional needs.** Membership in specific professional organizations, such as ALA and its constituent parts, SLA, MLA, SAA, ASIS&T, ALISE, and other groups with specialized foci, are of tremendous importance to most professionals in the LIS field. Also of benefit are local and regional groups such as state library and archives organizations, and local chapters of larger professional organizations. Beta Phi Mu can serve an important third role, as an organization that brings together LIS professionals across a wide range of job duties, employment settings, career stages, and geographic locations.

Beyond recognition and the opportunity to take part in cross-pollinating networking, what are the benefits of membership in Beta Phi Mu? A new page on the Beta Phi Mu website, "**Benefits of Membership**" (<http://beta-phi-mu.org/membership/benefits-of-membership/>)

lists both the tangible and the intangible benefits of membership in our society. Take a look! You may learn of some benefits of membership that you were previously unaware of.

We recognize that there is always more that can be done in terms of benefits to our members. To this end, BPM Headquarters has been researching benefits provided by other organizations and brainstorming additional benefits that we might offer. None of these should be implemented, however, unless they are opportunities or services that members truly want or need. We will be seeking concrete feedback from the Beta Phi Mu membership on these possible new benefits, as well as soliciting your own ideas; look for an announcement of a membership survey, coming out following the ALA Annual meeting. Data from this survey will **provide valuable members'** input and allow our Board to make more informed decisions as they steer the honor society in new directions in the coming years.



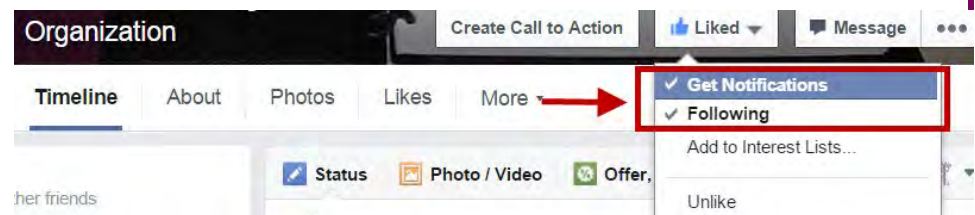
Alison M. Lewis

In case you missed it, in addition to some re-designing, a lot of new content has been added to the Beta Phi Mu web site. Check out the “Benefits of Membership” page (<http://beta-phi-mu.org/membership/benefits-of-membership/>), the enhanced “Scholar Series” pages (<http://beta-phi-mu.org/publications/scholars-series/>), and, of course, the link to the new Beta Phi Mu Café Press Shop found on the Merchandise page (<http://beta-phi-mu.org/merchandise/>) or directly, using this link: <http://www.cafepress.com/betaphimuhq>. If you have suggestions for items for the Beta Phi Mu Shop, please tell us.

Beta Phi Mu on Social Media

by Amanda Ros

For the latest news and updates from BPM, make sure to follow us on Twitter (@betaphimu), join our group on LinkedIn (<http://tinyurl.com/linkedinbpm>), and like us on Facebook (<http://tinyurl.com/fbbpmpofficial>). In order to keep up-to-date on our Facebook posts, make sure to enable notifications. We promise not to clutter your newsfeed, but when we do post it is information we feel is important for you, our members, to know about. All you need to do is click on the dropdown arrow next to “Liked” and check “Get Notifications”



Great opportunity from WikiEdu

For student clubs & chapters:

The Wiki Education Foundation is currently searching for Beta Phi Mu chapters to participate in their new pilot program. The program provides Wikipedia trainings, resources to host field trips, and more while supporting students on a Wikipedia editing project for the term. Groups looking for professional development and service opportunities, and who would like to find out more about this free program, should contact Samantha at Samantha@wikiedu.org. More information about Wiki Ed & the pilot program is available on the Wiki Ed website wikiedu.org.

For professors & librarians:

Have you considered having students contribute information about their studies to Wikipedia? The Wiki Education Foundation supports university instructors who want to upgrade traditional writing assignments to one that engages students with an authentic writing experience while boosting digital and information literacy, critical thinking skills, and knowledge of research methods. Students are asked to create or expand Wikipedia articles on topics that align with your course goals — **whether it's a course in the social sciences, arts & humanities, or any hard scienc-**

es. Staff, online training, paper handouts, and a customizable syllabus are some of the tools Wiki Ed offers. Instructors with any level of Wikipedia editing experience are welcome! To find out more, e-mail Eryk Salvaggio at contact@wikiedu.org.



See additional information on following page...

Wiki Ed serves as a bridge between academia and Wikipedia.

The Wiki Ed classroom program and student group program offer support for university classrooms and extracurricular programs that want their students to add content to related articles on Wikipedia.

Students are assigned to collect information from trusted sources related to a topic of their choosing. Students use these sources as the basis of a new, or improved, Wikipedia article. Students benefit from writing for an audience and experiencing feedback from Wikipedia editors. Wikipedia benefits from having students expand content on the site, which is free to the world long after the assignment is finished.

Student learning

There are many benefits for students as they work through their selected projects. Teaching with Wikipedia helps students improve communication, writing, and research skills, as well as develop critical thinking and media literacy.

For example, a student at Rice University enrolled in a sociology class with a Wikipedia assignment and created the article on HIV/AIDS in South African townships before leaving for an 8-week internship in South Africa. She liked the experience so much that when she took a second Wikipedia-focused class a year later, she created the article on HIV/AIDS in Malawi, which inspired her to return to Africa after graduation to conduct research at a rural clinic in Malawi.

Tools for student projects

So how do you get started? Here are some of the tools we offer classrooms and clubs:

Online student training: We provide access to our interactive online training, which gives students the chance to learn about Wikipedia policies, editing tips, and the community that creates it.

Brochures for students: We have three brochures aimed at students that introduce the basics of editing, evaluating, and illustrating Wikipedia, and three developed specifically for psychology, medical and sociology students.

One-page handouts for students: These one-page guidelines are more specific about the technical details on Wikipedia and serve as a reference during the term.

Classroom dashboard: This tool gives data to instructors and students about how much they have contributed to Wikipedia, whether they have completed the online training, and how many page views their work is getting.

Opportunity for Beta Phi Mu

Beta Phi Mu's motto – “consumed in the service as others” – highlights a mission of providing access to the world's knowledge to people throughout the world. Working on Wikipedia, the sixth most-visited website in the world, is one way to help students & members achieve this goal.

University students of all levels have unique access to academic, peer-reviewed journals and literature that defines topics that are important to researchers & academics in their field. Most people can't read those resources without a membership fee. Students love Wikipedia projects because it gives them the opportunity to take their learning on campus and transfer it out into the world for others' benefit in a digital space.

Beta Phi Mu is looking for a way to encourage scholastic achievement among its members. Wikipedia projects bring digital pedagogy to your fellows to do just that. These projects give students the opportunity to contribute content about relevant topics that are currently lacking in this encyclopedia.

The Gender Gap

Studies show that 90% of Wikipedia editors are men. Wikipedia articles on women are more likely to be missing, or shorter, than Wikipedia articles on men. For years, information on topics relevant to women simply hasn't been present, or had the same quality, as others. Some articles on Wikipedia that had been absent or incomplete – such as gender inequality, maternity leave, feminism, the refugee status of women, and the women's role in the Arab Spring – are thriving thanks to students and instructors in Wiki Ed's program taking them on.

Wikipedia projects focused on the gender gap means more people have access to neutral, accurate information on topics related to women and to your field. It means more articles on women intellectuals, scientists, artists, activists, and leaders.

Our programs

Wiki Ed's programs offer training, support and resources throughout the term. Our student group program is currently searching for any honor society, student group, or student club that meets to discuss something they're passionate about. Our classroom program is looking for any professors or interested university personnel. For more information, or to get on board, contact Samantha at Samantha@wikiedu.org.

Chapter News

Xi

Aloha from the **Xi Chapter** at the **University of Hawaii**. Our members continue to help with service activities with the Friends of the Library of Hawai'i and Hawai'i Public Radio... and to sometimes do fun things like catch one of our BPM Chapter board members singing in the Hawaii Opera Theatre.

Our most exciting news is that we now initi-

ate members in the Fall and Spring semesters at the student-run Graduation Dinner. You can enjoy photos from the 2014 Spring (May) and Fall (December) initiation ceremonies. And almost as exciting is that Xi Chapter Secretary Christian DeLay is now working at the LIS Program as Program Coordinator.

Yours with Aloha,

- Christian DeLay
Chapter Secretary
- Jan Kamiya
Events Chair
- Carole Suzui
Webmaster
- Diane Todd
Treasurer
- Suzanne Uratani
Xi Chapter President
- Andrew Wertheimer
Faculty Liaison



Spring 2014



Fall 2014

Omicron

2014 saw the initiation of 16 new members to Beta Phi Mu, Omicron Chapter. They are Karen Carter, Cassidy Charles, Meaghan Darling, Autumn Dilley, Anton Gruenewald, Jessica Hammond, Kim Iacucci, Kipp Leland, Michael McWilliams, Kenneth Norquist, Susan Quinn, Lorraine Scaffindi, Katherine Sweeney, Donna Swift, Melody Townley, and Chelsea Woods. Congratulations to all.

The initiation was held at the Rutgers Club with special guest speaker Dr. Joyce Valenza talking about **"Librarians and Social Capital."** At the initiation, generous scholarships were awarded to Juliette Appold

and Jennifer Hunter to enable them to continue their educational pursuits.

Omicron co-sponsors a Fall Lecture with the Rutgers Department of Library and Information Science, Rutgers University Libraries, the School of Communication & Information Alumni Association, and the NJ Center for the Book. Ivan Oransky, MD, co-founder of Retraction Watch, gave the talk at the 2014 Annual Fall Lecture. **Oransky's talk "The Good, The Bad, and The Ugly: What Retractions Tell Us About Scientific Transparency," shed light on the reasons** why papers are retracted, how often fraud occurs, whether journals are quick or slow to respond, and oth-

er issues related to scientific integrity.

The 2015 BΦM Fall Lecture Series features Dr. Wayne Wiegand, professor, author, and library historian, who will be talking about his new book, *'Part of Our Lives: A People's History of the American Public Library*, to be published on September 1st, by Oxford University Press.

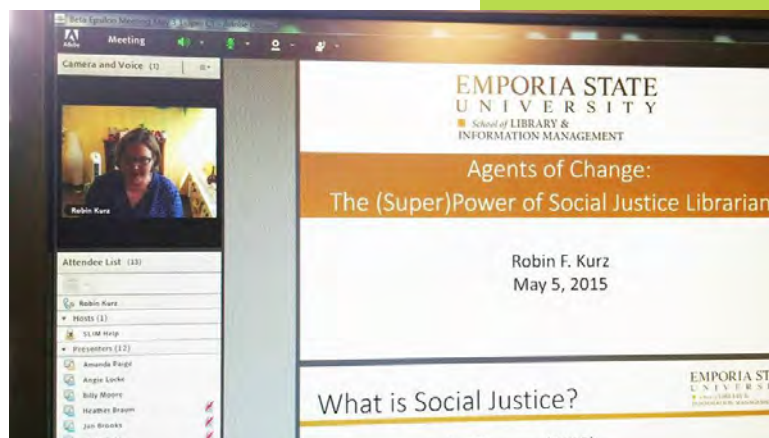
Thank you to Michelle Louden for supplying the content for this article and Dr. Marie Radford for granting permission to use the content.

Beta Epsilon

Beta Epsilon chapter of Beta Phi Mu held our annual business meeting, induction of new members, and program on Tuesday May 5, 2015. All members were invited to participate in the virtual meeting and program. Thirteen new initiates were welcomed into the chapter and updates of activities for the past year were highlighted. During the business meeting, Heather Braum, who serves as the NExpress Coordinator and Resource Sharing Librarian at the Northeast Kansas Library System in Lawrence, KS, was elected as vice-president for 2015.

Following the meeting, Emporia State University School of Library and Information Management faculty, Dr. Robin Kurz presented an

informative program, Agents of Change: The (Super) Power of Social Justice Librarians. After her presentation, Dr Kurz participated in a virtual interactive question and answer session. Minutes of the meeting and a link to both the business meeting **and Dr. Kurz' presentation** have been posted on the SLIM Beta Epsilon blog, <https://slimbetaepsilon.wordpress.com/>



Beta Omega

The Beta Omega chapter of Beta Phi Mu, located at the University of South Carolina was pleased to initiate six new members in the honor society on April 2, 2015.



Pictured here are Jessica Dai, Jason Broughton and Eve Ross. Four others: Morgan Kinder, Teresa Linebarger, Morgan Kinder and Rachel Walden were initiated in absentia. Dr. Samantha

Hastings, Director of the School of Library and Information Science introduced **the evening's events held at the South Carolina Center for Children's Books and**

Literacy. The event brought many interested parties together to enjoy the annual Beta Phi Mu initiation, USC-SLIS awards ceremony, and the Deans and Directors Lecture featuring Emily Gore, Director for

Content of the Digital Public Library of America. Beta Phi Mu is led by the leadership of Kristen Lawson, President; Crystal Johnston, Vice President; Jenny Dilworth, Treasurer; and Denise Lyons, Secretary.



Dr. Samantha Hastings

Beta Beta

Chapter officers, Alexander May, 2015/2016 President, and Amy E. Ferguson, treasurer/secretary, shared duties at the 2015 Beta Beta Chapter business meeting and induction ceremony on Tuesday, April 7. There were approximately 20 inductees present for the ceremony. The speaker of the evening was Dr. Mary Wilkins Jordan who spoke on Gamification in Libraries. We also honored our book scholarship recipient, Elizabeth Murphy, who wrote in her acceptance note, "...she is proud to be recognized by the prestigious Beta Phi Mu for her scholastic achievements.

Our special guest of the evening was Dr. Eileen G. Abels, the Beta Phi Mu president. As a symbol of our appreciation for President Abels' presence, the Chapter leadership presented everyone with a memento to mark the occasion."



From left to right: Shanti Freundlich, VP/President-elect; Alexander May 2015/2016 Beta Beta Chapter president; Dr. Eileen G. Abels, Beta Phi Mu president; and Amy E. Ferguson, treasurer/secretary.

Beta Beta Epsilon

University of Wisconsin-Madison chapter inducts new members

Beta Beta Epsilon inducted eight members during the Beta Phi Mu chapter's 31st annual meeting May 14 at the University of Wisconsin-Madison.

Inductees were Erin Augspurger, Katie Fox, Alaina Johnson, Mary Kwasnik, Darcy Poletti-Harp, Karlyn Spevacek, Zoe Stachel, and Carolyn Vidmar.

Beta Beta Epsilon membership is by invitation. School of Library & Information Studies faculty vote for graduating students based on scholarship, service, and leadership. To be eligible, members must have completed their library degrees with at least a 3.75 grade point average and have finished in the top 25 percent of the class.

Oliver Bendorf was selected as the Outstanding Student Scholar of the Year based on his class participation, outside activities, and professional promise. Finalists for the award were Katie Fox, Mary Kwasnik, Katelyn Martens, Darcy Poletti-Harp, and Carolyn Vidmar. Bendorf and the finalists were recognized at the School of Library & Information Studies graduation ceremony May 17.

Teresa Schmidt received the Jack A. Clarke Scholarship of \$1,700. The scholarship committee was impressed by Schmidt's demonstrated connection to public libraries and the com-

munities that rely on them, her commitment to professional development, and her desire to serve as a leader in her field. Committee members were Lisa Abler, Kristina Gomez, and Brett Rohlwing.

Also at the meeting, Beta Beta Epsilon elected the Jennifer McBurney as vice president for membership. McBurney will join past-president Troy Espe, president Rohlwing, and faculty adviser Ethelene Whitmire. Espe, who led the meeting, thanked departing board members Gomez, Jessica Newman, and Cristina Springfield for their service.

To end the meeting, Whitmire discussed her award-winning biography "**Regina Anderson Andrews: Harlem Renaissance Librarian.**"

To learn more about Beta Beta Epsilon, visit www.slis.wisc.edu/PBPM.htm.



Beta Beta Epsilon welcomed eight new members May 14 at the University of Wisconsin-Madison. Pictured inductees were, from left, Karlyn Spevacek, Erin Augspurger, Katie Fox, Alaina Johnson, Mary Kwasnik, Zoe Stachel, and Carolyn Vidmar. Not pictured was Darcy Poletti-Harp.

Pi Lambda Sigma

Spring, 2015, Greetings from Pi Lambda Sigma Chapter at the original iSchool, The School of Information Studies at Syracuse University!

Our 56th Annual Meeting and Initiation as an affiliate of Beta Phi Mu was held Friday, May 8, at the Sheraton University Hotel and Conference Center. As the oldest library honor society in the U.S., May 8th also marked our 112th Chapter meeting.

Ten graduates accepted membership this year: Nancarrow Brown, Sarah Bratt, Elizabeth Crowder, Brandon Fess, Kathryn Justus, Margaret McInnis, Dina Meko, Kyra Nay, Jennifer Peters, and Wei Quan. We congratulate these new members!

Our guest speaker for Initiation evening was Dr. R. David Lankes, Professor and **Dean's Scholar for the New Librarianship** at the iSchool. Co-creator of askERIC, Dr. Lankes is also the Director of the Information Institute of Syracuse and a prolific author on the subject of New Librarianship. His book, The Atlas of New Librarian-

ship, is his latest award-winner. In fighting cancer again, he has also written insightfully in The Boring Patient. **Dr. Lankes's talk** was a passionate and inspirational plea to the new initiatives to be **"brave" on the job in times they might not now imagine, and to "share" their new knowledge with all, to help all, for while less-experienced, they are more up-to-date than many.**

Our campaign to rebuild funds to again award our Dosa Scholarships has been very successful, but sadly in no small part due to the passing of beloved Professor Emerita Marta Dosa. The Board has re-thought the costs of courses and increased the awards also given as Van Hoesen interest-free loans. Our Marion Mullen Travel Award is awarded this year to Pauline Lynch Shostack, a librarian at Coulter Library - Onondaga Community College and a past - president of our Chapter. Pauline will attend Summer ALA in San Francisco in June and attend the annual Beta Phi Mu National meeting as Chapter representative. Congratulations, Pauline!

Our current Executive Board members are: President Linda Galloway, SU Libraries; Past President Abby Kasowitz-Scheer, SU Libraries; Recording Secretary Ellen Owens, Crouse Hospital Medical Library; Corresponding Secretary Susan Slenker, retired school librarian; Treasurer Suzanne Preate, SU Libraries; Membership Chair Christine Demetros, SU/ Barclay Law Library; Scholarship Chairs Gary Maggi, health sciences librarian, and Valarie Masulik, Onondaga County Public Library; at-large Board members Nicole Ditrach, SU Libraries; Jennifer Huzenitza, Northern Onondaga Public Library; Carole Kupelian, retired school librarian; Anne Rauh, SU Libraries, and Robert Weiner, SU/Barclay Law Library. Together, we manage the **Chapter's mission of extending financial support to the most academically-gifted yet challenged iSchool students in the Library and Information Science graduate degree program.** iSchool Advisor is Blythe Bennett, Program Manager, LIS/ School Media.

We have finished upgrades to our website and now allow members to pay dues and make contributions electronically through PayPal. Our website is < <http://bpm.syr.edu/> >. Visit us online, or follow us on Twitter at BPM_Syracuse.

Submitted by Susan Slenker, Corresponding Secretary, jslenker@twcny.rr.com



The New Pi Lambda Sigma Members

Sigma

Sigma Chapter Inducts New Members & Welcomes New Officers

On Thursday, December 4, 2014, Beta Phi Mu Sigma chapter inducted the following members:

Karl-Rainer Blumenthal
 Jennifer Patrice Carey
 Tuesday Chalmers
 Tiffany K. Chow
 Rachel Kontrovitz Christiansen
 Janette Kathryn Dauenhauer
 Janine D'Auria (Panico)
 Kenya S. Flash
 Valerie Province Florez
 Dana M. Giusti
 Susan Pemberton Griffiths
 Marija N. Gudauskas
 Victoria Marre Karasic
 Michele Dawn Lefler
 Cara Marie Marsh
 David M. McAllister
 Amanda E. Mita
 William Downing Robinson
 Linda Anne Surovich
 Rebecca Joy Thompson
 Geoffrey T. Valentine
 Nicole Marie Westbom

New officers have joined the 2015 Sigma chapter Executive Council.

Faculty Advisor - Lisl Zach has a PhD from the College of Information Studies, University of Maryland, College Park. She has been teaching at **Drexel's College of Computing and Informatics** since 2007.

President - Lindsay Cummings (MSLIS '11) is the Young Adult Librarian at Abington Township Public Library. She previously served as co-chair of **Drexel's Student Chapter of the American Library Association (SCALA)**.

Secretary - Kelley Cotter (MSLIS '11) is the Marketing & Electronic Communications Librarian at Duquesne University in Pittsburgh.

Board Member - Meg Finney (MSLIS '08) is the Librarian at Memorial High School in Millville, NJ. She has worked on several committees for the Young Adult Library Services Association.



From left to right: John Wiggins, Rachel Korman, Dana Giusti, Tuesday Chalmers, David McAllister, Dr. Trudi Bellardo Hahn, Lindsay Cummings, Evan Peugh, Samantha Kennedy

Sigma Chapter Bids Farewell to Faculty Advisor

Dr. Trudy Bellardo Hahn

Dr. Trudy Bellardo Hahn, who served as faculty advisor to Drexel's Sigma Chapter for the past two years, is retiring after an illustrious career in teaching, research and administrative leadership in information science. She assumed responsibility at a time when the chapter was not functioning due to a lapse in the process of electing officers. At the same time she was opening the College's Washington, DC, education program and office, recruiting faculty, teaching and holding leadership positions in the Asso-

ciation for Library and Information Science Education (ALISE). In no time, it seemed, she worked with alumni, faculty and staff to recruit new leadership for the chapter and reinvigorate our program.

Those of us who had the privilege to serve on the chapter board during this period thank Trudi for unwavering support in revitalizing Sigma Chapter. We wish her well in her retirement.

Chuck Broadbent, MS '70, Ph.D. '84

Lambda

Oklahoma Lambda Chapter members and initiates enjoyed another fantastic annual SLISebration this year, on the evening of April 25, 2015 in Norman, OK. The joint Beta Phi Mu Lambda Chapter initiation and the University of Oklahoma School of Library and Information Studies (OU SLIS) celebration continues to delight and inspire new and seasoned professionals alike. Lambda Chapter officers thank the OU SLIS faculty and staff, as well as our initiates for another great year!

In addition to our annual business meeting, Lambda Chapter was delighted to welcome five initiates at this **year's ceremony**, Lisa Haldeman, Melissa Kunz, Garnet Nowell, Andy Taylor and Briann Zimmerman. We also welcomed two new members *in absentia*, Erin McLean Boggs and Jenny Duncan.

This year's SLISebration keynote speaker was Pam Sandlian Smith, Director of Anythink Libraries in Colorado. Ms. Sandlian Smith highlighted the transformation of the Rangeview District Libraries in Colorado that she, her team and the communities have achieved by embracing an ongoing process of creative discovery. Ms. Sandlian Smith's presentation sparked great excitement and vivacious conversation. *(picture on next page)*

Finally, the evening concluded with a dinner and awards presentation. Lambda Chapter was honored to present this

year's Irma Tomberlin Scholarship to OU SLIS student, Kelly Sitzman. Congratulations, Kelly!



From right to left: President, JJ Compton. Initiates: Andy Taylor, Briann Zimmerman, Lisa Haldeman, Melissa Kunz, Garnet Nowell



Initiate Garnet Nowell signs the Great Roll

Lambda Continued ...

SLISEbration photo - Lambda Chapter sponsor, Kelvin White (far left), with officer and initiates

Epsilon

On May 7, 2015, the Epsilon Chapter of Chapel Hill, North Carolina held its annual dinner and induction ceremony. The chapter inducted seventeen new members and awarded its Achievement Award to Laura Pavlech. Terrell Russell, Data Management Research Scientist at the Renaissance Computing Institute shared his predictions for the future of data management in a compelling keynote address, which was followed by a lively discussion. The chapter elected three new officers: Lisa Gregory as Vice President/President-Elect, and Dawne Lucas and Christine Stachowicz

as co-Secretary/Treasurers. John Blythe became the Chapter's new President.



Three new initiates in the Epsilon Chapter

BETA PHI MU

Drexel University
College of Computing and
Informatics
3141 Chestnut Street
Philadelphia, PA 19104

Phone: 215-895-2492
Fax: 215-895-2494
E-mail: betaphimu@drexel.edu

We're on the Web
beta-phi-mu.org



www.beta-phi-mu.org

Aliis inserviando consumor

Beta Phi Mu was founded in 1948 by a group of leading librarians and library educators to recognize and encourage scholastic achievement among library and information studies students. Our name comes from the initials of the Greek words *Bibliothekarios philax mathesis*, meaning “librarians are the guardians of knowledge.” The motto, *Aliis inserviando consumor*, meaning “Consumed in the service of others” was selected by the founders based on the concept of the dedication of librarians and other information professionals to the service of others. Eligibility for membership in Beta Phi Mu is by invitation of the faculty from institutions where the American Library Association, or other recognized accrediting agency approved by the Beta Phi Mu Executive Board, has accredited or recognized a professional degree program.

Upcoming Events – Mark Your Calendars



Plan to join us for the 2015 Beta Phi Mu G-ALA at Annual

Date: Saturday, June 27

Time: 3:00 to 5:00 p.m.

**Place: Market Street Room at the Parc 55
55 Cyril Magnin Street, San Francisco**

Shuttle service is available from the Moscone Center or walk over

Don't miss this great opportunity to network with other Beta Phi Mu Members. There will be door prizes!

We hope to see you there—RSVP to betaphimu@drexel.edu